

THE ROLE OF THE BANGKA BELITUNG NAVAL BASE IN SUPPORTING THE SEA SECURITY OPERATIONS IN THE INDONESIA ARCHIPELAGIC SEA LANE I

Manahan Budiarto Pandjaitan¹, Panji Suwarno², Gunardi³

Sekolah Staf & Komando TNI Angkatan Laut, Jakarta
(manahan_budiarto@tnial.mil.id, suwarnop@yahoo.com, gunardi@tnial.mil.id)

Abstract - The work areas that are the responsibility of the Bangka Belitung Naval base are still quite vulnerable and responsible for problems and difficulties that could disrupt the ALKI I or the Indonesian archipelagic sea lane I. The area for which the naval base of Bangka Belitung is responsible, is not balanced. However, it must continue to provide the best support for all KRI (Warships of the Republic of Indonesia) which anchored in the Bangka Belitung Naval Base. This study tries to analyze the role of the Bangka Belitung Naval base in supporting maritime security operations in ALKI I. The study uses descriptive qualitative methods about understanding the Bangka Belitung Naval base in supporting maritime security operations at ALKI I. This study uses the role of base theory, Sea Power theory and Navy trinity theory. The results of the study show that the Bangka Belitung Navy Base has not yet supported KRI or not to carry out the provision. Therefore, it is agreed that the Bangka Belitung Naval Base would provide complete facilities and infrastructure including anchoring, to be able to support KRI to operate safely at sea in assisting sovereignty in the ALKI I region.

Keywords: Naval Base Role, Maritime Security, ALKI I

Introduction

The Indonesian Navy (TNI-AL), in carrying out its primary duty, i.e.: in the field of defense; in enforcing law and security within the national maritime jurisdiction in accordance with the provisions of international and law in carrying out Naval diplomacy task to support the government's enacted foreign policy, in carrying out the National Armed Forces (TNI)'s duty to build and develop naval power; as well as in carrying out maritime

defense empowerment for the sake of implementing all of those duties properly, the TNI-AL Naval Base needs adequate support in terms of service and logistics. Therefore, in order to provide adequate support for elements or Indonesian Warships (KRI) that will implement replenishment (*bekul*), we believe that the Bangka Belitung Naval Base must be equipped with adequate facilities and infrastructures so they can support the elements of the operation of TNI-AL in protecting the sovereign area around

¹ Dikreg Seskoal Cohort 57.

² Indonesia Defense University Lecturer.

³ Kadepops Seskoal.

ALKI-I.

This research aims to ascertain the role of the base owned by Bangka Belitung Naval Base in supporting maritime security operation in ALKI-I. This research focuses on the role of Bangka Belitung Naval Base in supporting *bekul* for all elements or KRI that implements maritime security operation in ALKI I area.

The Bangka Belitung Naval Base, as part of the Integrated Naval Weapon System (SSAT), is a component that provides support to Naval Fleet (element or KAL), which requires replenishment. As

a component that plays a role in supporting KRI or Elements, the base needs to be well-equipped, in accordance with international standard, as a requirement for an ideal base. The Bangka Belitung Naval Base is one of the components of SSAT (Integrated Naval Weapon System), which belongs to the Komando Lantamal III Jakarta. Currently, the Bangka Belitung Naval Base consists of 4 (four) naval posts (Posal), namely Pangkal Balam Posal, Muntok Posal, Tanjung Pandan/Mendanau Posal and Manggar Posal.⁴



Figure 1. ALKI I Route

Source: Kresno Buntoro, Marsetio, dan Hasjim Djalal, *Alur Laut Kepulauan Indonesia (ALKI) Prospek dan Kendala*, (Jakarta: Seskoal, 2012).

⁴ Bangka Belitung Lanal Posal Data, 2018

This research focuses on the role of the bases owned by Bangka Belitung Naval Base in supporting maritime security operation in ALKI I.

Research Methods

This research employs a qualitative-descriptive approach. The qualitative-descriptive approach aims to describe and illustrate existing phenomena, either scientific or artificial phenomena, by taking into account the characteristics, quality and interrelatedness between activities. According to Riduan, research methods can be carried out in the form of survey research method, *ex post facto*, experiment, action research, evaluation and history.⁵

In this research, the author employs the first informant data collection technique, in a purposive manner, or intentionally before carrying out the research. The author established certain criteria that need to be met by the resource person, through the snowballing approach. The data collection technique employed in this research is an in-depth interview and document collection obtained from informants and various

sources used to strengthen the data of this research.⁶

The author implements this research by collecting data from the Bangka Belitung Naval Base. The Bangka Belitung Naval Base (Babel Lanal) is domiciled in Bangka Belitung Islands Province, specifically in Belinyu Sub-district, Bangka District, with work area covering 1 (one) City Government and 6 District Government, namely Pangkalpinang City, Bangka District, West Bangka District, Central Bangka District, South Bangka District, Belitung District and East Belitung District. It also includes 4 (four) Naval Posts (Posal), namely:

- a. Pangkal Balam Posal, in Pangkalpinang City.
- b. Muntok Posal, in West Bangka District
- c. Mendanau/Tanjung Pandan Posal, in Belitung District
- d. Manggar Posal, in East Belitung District.

Relevant Theories

1. Role Theory

Role is a theory used in sociology, psychology and anthropology, which is a combination of various theories, orientations and disciplines. Role

⁵ Riduan, *Metode dan Teknik Menyusun Tesis*, (Bandung: Alfabeta, 2010), p. 49.

⁶ Hari Mulyadi, "Peran Pangkalan TNI Angkatan Laut Cilacap Dalam Pembinaan Potensi Maritim

Guna Menghadapi Imigran Gelap", *Jurnal Prodi Strategi Pertahanan Laut Unhan*", Vol. 3, No. 3, 2017, p. 95.

theory describes the term “role” which is commonly used in theatre, where an actor in theatre must play a particular role and, due to their role, expected to act particular behavior. The position of an actor is akin to the position of a person in society, and both of them has an equal position.⁷

2. Base Theory

It prescribes that the primary goal of a naval base, in general, is to provide shelter, reparation and logistics for ships as well as a place for ship crews to rest and have entertainment. It acts as a focus of power as near as possible to a potential enemy, to be part of the sail, to warn against enemy attack, and to ensure the control of self-delivery.⁸

3. Sea Power Theory

Sea Power is an essential element for the glory of a nation. In addition, the Navy’s power is the main necessity that allows a nation to become great, strong and developed. State defense actors in the sea include commercial fleet, Navy and naval base. It can be concluded that Sea Power theory is an exceedingly important element for a nation and thus said nation must control the sea

and prevent its enemies from using it. This theory is relevant in this research about naval base or port owned by a maritime state.

4. Navy Trinity Theory

The Navy Trinity Theory, as part of the universal sea power, plays an important role, namely:

- a. Military Role. In essence, it is the optimal use of power to achieve victory in war or armed conflict.
- b. Diplomatic Role. The use of sea power as a diplomatic vessel to support the government’s foreign policy and designed to influence the leadership of other nation or nations during the time of peace or hostility.
- c. Constabulary Role. Constabulary Role is implemented in enforcing the law on the sea, to protect national resources and maritime power, to maintain order on the sea, and to support national development as well as contributing to national stability and development.

Relevant Past Researches

In this research, the author contributes to the existing pool of literature that is

⁷ Sarlito Wirawan Sarwono, *Teori- Teori Psikologi Sosial*, (Jakarta: Rajawali Pers, 2015), p. 215.

⁸ Hotma Untung Sinaga, “Analisis Kemampuan Pangkalan TNI AL Tarakan dalam Menghadapi

Potensi Konflik di Laut Sulawesi (Blok Ambalat)”, Tesis Pasis Dikreg Seskoal Angkatan ke-53, (Jakarta, Seskoal, 2015), p. 17.

relevant and can be used as a reference for this research. Although different in object, variable or location, those researches can be used as a first step for the author in carrying out this research. The following are the past researches:

- a. The Role of Balikpapan TNI-AL in Supporting Regional Maritime Security Operation against the Existence of National Vital Object.¹⁰
- b. Analysis of the Capability of Tarakan TNI-AL Naval Base in Dealing with Potential Conflict in Sulawesi Sea (Ambalat Block).¹¹
- c. The Strategy of Lantamal II Padang in Securing National Vital Object in the Maritime Area South of West Sumatera (Teluk Bayur Port Case Study).¹²
- d. The Strategy of Banten TNI-AL Naval Base in Supporting the Security in ALKI-I.¹³
- e. The Role of Cilacap TNI-AL Naval Base in Developing Maritime Potential to Deal

with Illegal Immigrants.¹⁴

Discussion

The Role of TNI-AL Naval Base in supporting ALKI 1 security operation.

The TNI-AL Naval Base must be able to support the maritime operation organized by TNI-AL. Otherwise, the TNI cannot run optimally without being balanced with the provision of adequate support. Therefore, the tasks and duties of a naval base as a place for rebasing, replenishment, organizing and maintenance as well as reparation of TNI-AL's operational elements, including the maintenance of personnel, must be able to provide adequate support.

This support capability is colloquially known as the '5R' function, namely Rebase, Replenishment, Repair, Rest and Recreation, must be continually improved. An ideal TNI-AL Naval Base must be able to provide those 5Rs to ensure the smooth

¹⁰ Hari Wiwit Wijaksono, *Peran Pangkalan TNI Angkatan Laut Balikpapan dalam Mendukung Operasi Keamanan Laut Wilayah Terhadap Keberadaan Objek Vital Nasional*, (Jakarta: Seskoal, 2015).

¹¹ Hotma Untung Sinaga, *op.cit.*

¹² Prima Tegar Anugrah, "Strategi Lantamal II Padang Dalam Mengamankan Obyek Vital Nasional di Wilayah Perairan Selatan Sumatera Barat, (Studi Kasus Pelabuhan Teluk Bayur)", Tesis Mahasiswa Unhan, 2019.

¹³ Eko Yuri A, "Strategi Pangkalan TNI Angkatan Laut Banten Dalam Mendukung Pengamanan Di Alur Laut Kepulauan Indonesia – I", *Jurnal Prodi Strategi Perang Semesta Unhan*, Vol. 4, No. 2. 2018

¹⁴ Hari Mulyadi, "Peran Pangkalan TNI Angkatan Laut Cilacap Dalam Pembinaan Potensi Maritim Guna Menghadapi Imigran Gelap", *Jurnal Prodi Strategi Pertahanan Laut Unhan*, Vol. 3, No. 3. 2017.

operation of Elements or KRI.

Data Processing with NVivo

The author employs NVivo to process the data of this research. The obtained research data were coded in NVivo to help in arranging themes and exploring the relationship between attributes or the thematic aspects of the field finding. The coding is derived from the research question, field findings on the research subject, as well as secondary data. The theme classification is made using the

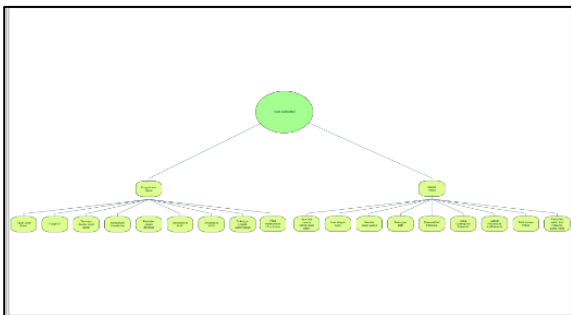


Figure 2. Mind Map Making Process in NVivo according to the research question
Source: Processed by Author, 2019

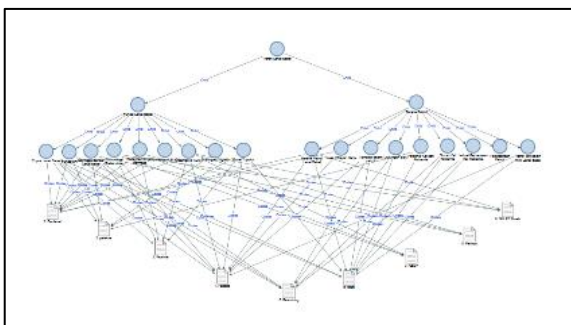


Figure 4. Chart of Triangulation over Research Question 1 and 2.
Source: Processed by Author, 2019

NVivo's coding by referring to the research question as well as the theories

and concepts employed in this research. The nodes classification of NVivo refers to the interview guideline.

All of the interview transcripts were then inserted in the coding to obtain the appropriate result. The result can be seen in the sources and references column, with regard to the number of nodes discussed by informants. After the data has been processed using NVivo, we can see that not all informants were focused on each category submitted during the interview process.

Data Analysis

In accordance with the Kasal Decision Number Kep/11/VIII/2004 dated 26 August 2004 concerning the Formation of Bangka Belitung TNI-AL Naval Base Type "B", the role of Bangka Belitung Naval Base Type B is as follows:

1. Docking Facility Support Function

The anchor facility support function is one of the roles of TNI-AL Naval Base, namely as a place or facility for Elements/KRI/Kal to dock while conducting patrol or operation around that base. The Docking Facility includes:

- a. Port: Used by elements to dock.
- b. Docking Area: Used by elements to let go of the anchor.

Based on direct observation, the author argues that Bangka Belitung Naval Base does not yet have their own port. This was also reported by various informants, among others, Bangka Belitung Naval Base Commandant, Navy Lt. Col. (P) Mohamad Taufik, M. MDS during an interview in Babel Air Itam Danlanal Mess on 24 May 2019 at 11.12 WIB, Bangka Belitung Naval Base Pasminlog Navy Captain (T) Rangga S. Wihawary, during an interview in Pangkal Balam Posal Office, Bangka Belitung Naval Base, on 24 May 2019 at 11.23 and an outside party, the Branch General Manager of Pangkal Balam Port, Mr. Nugroho Iwan Prasetyo, in the Pangkal Balam Port office, on 24 May 2019 at 09.42 WIB.

Based on the result of various interviews and observation in the field, the author concludes that the Bangka Belitung Naval Base has not played its role in supporting elements or KRI to let go their anchor after implementing maritime security operation in ALKI-1 — because they do not have docking facility. Currently, the base is still borrowing the docking facility owned by PT. Pelni. As a result, when a navy ship is about to dock, they will have to wait in line along with other ships. This

inhibits the smooth operation of elements or KRI. The variable used to measure the role of a naval base in supporting operation is the existence of a docking facility for KRI or Elements to let go their anchor. Since the base currently does not have one, their role is still lackluster.

2. Maintenance and Repair Facility Support Function

Maintenance and repair facility support function includes:

- a. Light Docking Facility
- b. Machine Workshop Facility
- c. Electronic Workshop Facility
- d. Bakap Workshop Facility

During an interview with Bangka Belitung Naval Base Pasminlog Navy Captain (P) Rangga S. Wihawary in the Pangkal Balam Posal Office, Bangka Belitung Naval Base, on 24 May 2019 at 11.23, he reported that Bangka Belitung Naval Base has no maintenance and repair facility, but they can accommodate it by coordinating with the maritime services industry in Bangka Belitung area, among others, PT. Marina Muara Emas (MME) and PT. DAK, should there be an urgent need for repair from Patrol elements.

The non-existence of maintenance and repair facility,

including the fact that the base is still borrowing other places, causes the implementation of maintenance and repair support to be ineffective. Hence their role is still lackluster even if they can still accommodate it by borrowing other places.

3. Replenishment Facility Support Function

Replenishment Facility Support Function means a base is capable of replenishing elements or operational unit that is conducting operation within the work area of the base, including initial logistics or replenishment. This can be fluid logistics or individual logistics (foodstuffs). Bangka Belitung Naval Base used to be able to provide adequate fluid logistics (Fuel and AT) and individual logistics (foodstuffs). However, since January 2019, the Bangka Belitung Naval Base can no longer support fluid logistics (fuel) due to the government's program to limit the use of HSD and replacing it with B20 (Bio Solar), whereas the Babel Pertamina is not included in the Fame receipt map (HSD). This was reported by Bangka Belitung Naval Base Pasminlog Navy Captain (T) Rangga S. Wihawary in the Pangkal Balam Posal

Office, Bangka Belitung Naval Base, on 24 May 2019 at 11.23 WIB.

4. Personnel Nourishment Facility Support Function

Personnel nourishment facility support function means the base must provide nourishment for personnel that belongs to the operational elements or unit within the work area of the base. Personnel nourishment can be provided in the form of health facility, accommodation and sports facilities. Health facility means BK (Health Center) or BP (Healing Center); accommodation means housing, mess and sports facilities. This was reported by Bangka Belitung Naval Base Pasminlog Navy Captain (T) Rangga S. Wihawary in the Pangkal Balam Posal Office, Bangka Belitung Naval Base, on 24 May 2019 at 11.23 WIB.

5. Naval Base Development Facility Support Function

Naval base development facility support function means a facility to support, develop and maintain soldier's instinct and skills, in the form of a training ground. During an interview with Bangka Belitung Naval Base Pasminlog Navy Captain (T) Rangga S. Wihawary in the Pangkal Balam Posal Office, Bangka Belitung Naval Base, on

24 May 2019 at 11.23 WIB, he reported that the Bangka Belitung Naval Base has been able to provide adequate support for this function.

Conclusion

The role of Bangka Belitung Naval Base in supporting maritime security operation in ALKI I for the operational elements is still underwhelming, especially in providing docking facility and repair and maintenance facility. It is thus necessary to build special port for TNI-AL, in this case, the Bangka Belitung Naval Base, in order to support elements/KRI/Kal to implement replenishment in Bangka Belitung Naval Base, so the maritime security operation in ALKI I can be adequately supported.

Based on the result of data processing using NVivo tools, we found that the role of Bangka Belitung Naval Base, whether according to interview with existing informants and regulators, operators and observers, is still unable to provide support for elements/KRI/Kal that are operating within the Bangka Belitung Naval Base work area.

The author's recommendation to TNI-AL Leadership and to the Bangka Belitung Naval Base Commandant, as input and consideration in making future policies, is that the Bangka Belitung Naval

Base must build special port for TNI-AL. This way, the elements/KRI/Kal can quickly replenish in Bangka Belitung Naval Base so that maritime security operation can be well-supported.

References

Book

- Buntoro, Kresno, Marsetio, dan Hasjim Djalal. 2012. *Alur Laut Kepulauan Indonesia (ALKI) Prospek dan Kendala*. Jakarta: Seskoal.
- Data Posal Lanal Bangka Belitung tahun 2018. Bangka Belitung: Posal.
- Riduan. 2010. *Metode dan Teknik Menyusun Tesis*. Bandung: Alfabeta.
- Setianegara, Herry. 2014. *Strategi Maritim Perang Riau*. Jakarta: Pusjianmar-Seskoal.
- Sarwono, Sarlito Wirawan. 2015. *Teori-Teori Psikologi Sosial*. Jakarta: Rajawali Pers.
- Simanjuntak, Mangisi. 2018. *Konvensi PBB 1982 Tentang Hukum Laut Makna dan Manfaatnya Bagi Bangsa Indonesia*. Jakarta: Mitra Wacana Media
- Soekanto, Soerjono. 1983. *Faktor-Faktor yang Mempengaruhi Penegakkan Hukum*. Jakarta: PT. Rajagrafindo Persada
- Wijaksono, Hari Wiwit. 2015. *Peran Pangkalan TNI Angkatan Laut Balikpapan dalam Mendukung Operasi Keamanan Laut Wilayah Terhadap Keberadaan Objek Vital Nasional*. Jakarta: Seskoal.

Journals

A, Eko Yuri. 2018. "Strategi Pangkalan TNI Angkatan Laut Banten Dalam Mendukung Pengamanan Di Alur Laut Kepulauan Indonesia I". *Jurnal Prodi Strategi Perang Semesta Unhan*. Vol. 4. No. 2.

Mulyadi, Hari. 2017. "Peran Pangkalan TNI Angkatan Laut Cilacap Dalam Pembinaan Potensi Maritim Guna Menghadapi Imigran Gelap". *Jurnal Prodi Strategi Pertahanan Laut Unhan*. Vol. 3. No. 3.

Thesis

Anugrah, Prima Tegar. 2019. "Strategi Lantamal II Padang Dalam Mengamankan Obyek Vital Nasionaldi Wilayah Perairan Selatan

Sumatera Barat, (Studi Kasus Pelabuhan Teluk Bayur)". Tesis Mahasiswa Unhan.

Sinaga, Hotma Untung. 2015. "Analisis Kemampuan Pangkalan TNI AL Tarakan dalam Mneghadapi Potensi Konflik di Laut Sulawesi (Blok Ambalat)". Tesis Pasis Dikreg Seskoal Angkatan ke-53. Jakarta: Seskoal.

Regulation

Peraturan Komandan Seskoal Nomor 7 tahun 2019 tentang Pedoman Penulisan Tesis Dikreg Seskoal.